

My City Construction

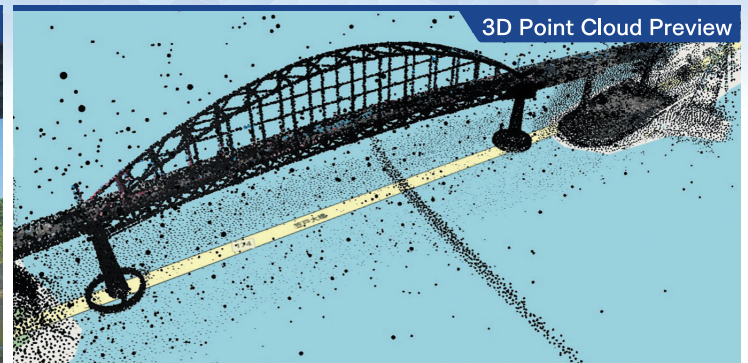
Online Electronic Delivery System



Electronic Results of Road Work, Construction, etc. Can Be Delivered Online!

Now fully implemented in Shizuoka Prefecture,
Yamaguchi Prefecture, Ibaraki Prefecture, Tottori Prefecture,
Yamagata Prefecture, Kumamoto Prefecture, and Shizuoka City.

(as of December 2025)



What Is the Online Electronic Delivery System (My City Construction)?

With the recent full-scale launch of “i-Construction” by the Ministry of Land, Infrastructure, Transport and Tourism, the collection of 3D data, such as point cloud data, is increasing at public construction sites managed by local governments, etc. However, not much good use of the electronic deliverables containing such data have not been made so far. In this context, to support efficient delivery and enhanced utilization of the deliverables, we built and launched an online electronic delivery system called “My City Construction” (MCC), which has been in full operation since FY2020. As a cloud-based service, MCC does not require any initial or maintenance fees*, making for easy adoption not only by prefectural governments but also by smaller municipalities.

Deliver

Contractors simply upload the deliverables via a browser!

Store

No initial or operating fees required since it is a cloud-based service*.

Publish

Both buyers and contractors can be easily searched via a browser!

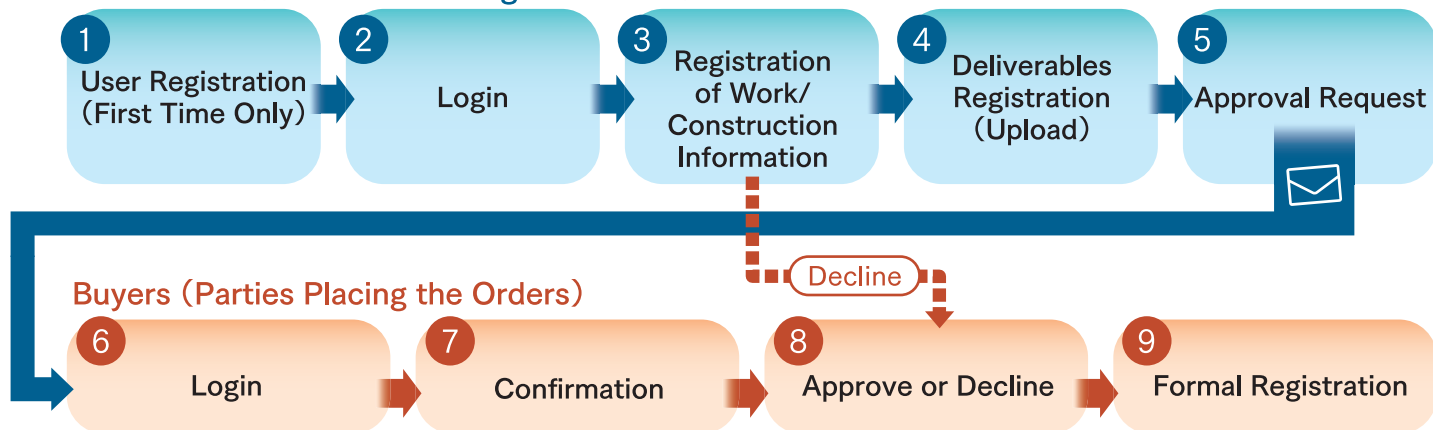


* Contractors (parties receiving the orders) will be charged 11,000 yen per order (incl. tax) at the time of online electronic delivery, so there will be no cost burden on the buyers side in relation to the registration of deliverables. There is no actual charge on the contractors' side either, as the cost related to online delivery is included in the cost of construction/work.

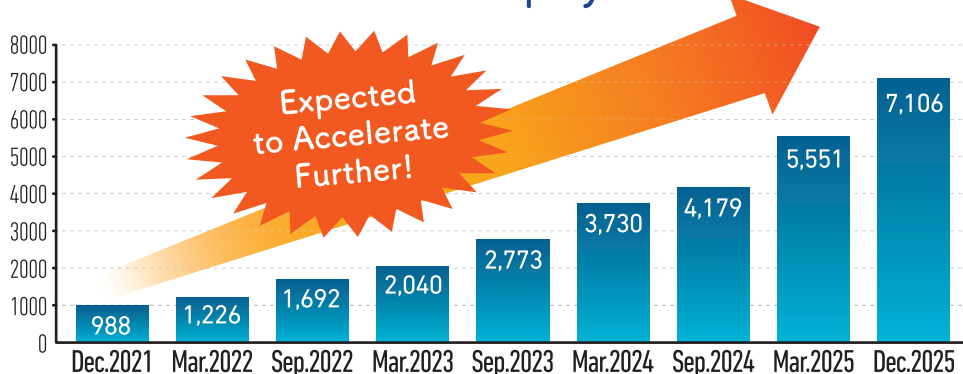
■ Flow of Deliverables Registration

The service is accessed via the website. From the registration of deliverables to the request for approval by the buyers, everything can be processed online.

Contractors (Parties Receiving the Orders)



■ Current State of MCC Deployment



Online Electronic Deliverables History

7,106 Cases

of Contractors

1,010 Entities

of Participating Municipalities

21 Municipalities

(As of December 2025)

■ Effects of MCC Use

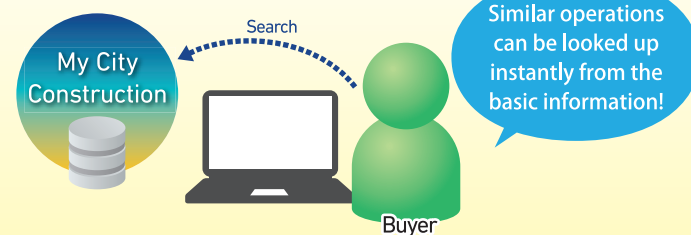
Streamlined Registration Process

Traditionally, deliverables (CDs) from the contractors were registered in the storage system by the buyers. With MCC, contractors register the deliverables, thus no work is required on the side of buyers.



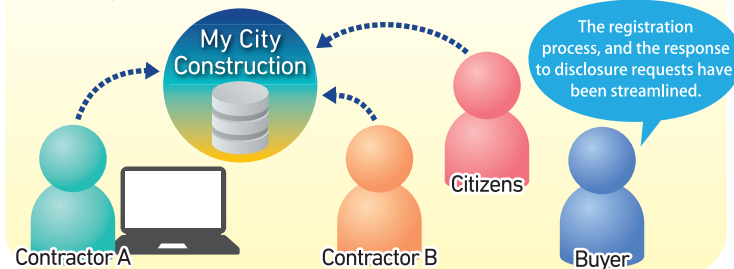
Advanced Search

Deliverables can be searched efficiently based on the basic information registered in MCC.



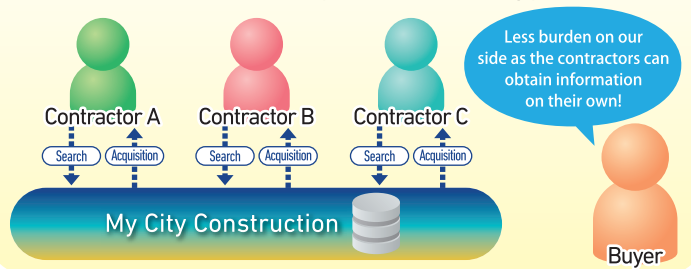
Open Information

Deliverables (e.g. point cloud data) can be released immediately upon agreement between the buyer and the contractor.



Accelerated Deliverables Handover

The elimination of the need for electronic media exchange reduces the time and effort required for the lending process.



(General Incorporated Association) Association for
Promotion of Infrastructure Geospatial Information Distribution

【 My City Construction Office 】

1-10-5-203 Yoyogi, Shibuya-ku, Tokyo 151-0053 (Email) mcc-contact@aigid.jp (Phone) 080-9086-0303

■ For more information, please visit our website:

<https://mycityconstruction.jp>

My City Construction
Website

