

# Geospatial Information Center

Platform for Utilization and Dissemination of  
Geospatial Information



# For a Data Powered Community

## Centralized Platform

## Supporting the Utilization and Distribution of Geospatial Information

The Geospatial Information Center (GsC) is a platform that promotes the effective use and distribution of specialized Geospatial information generated and maintained by various groups for diverse purposes. It also provides logistical support to actors working to solve social issues. The center was established based on the "Basic Plan for the Advancement of Utilizing Geospatial Information" approved by Cabinet members of the Japanese government in March 2012, and has been in operation since November 24, 2016. The GsC is managed by the Association for Promotion of Infrastructure Geospatial Information Distribution (AIGID).

It provides a one-stop search system for geospatial data and related information which users require, whether for a sales purpose or free of charge. In general, the center is a platform that supports distribution of data that maximize the social value of geospatial information. Our activities include participating in various events, promotional activities, and organizing seminars. In addition, we deploy projects aimed at innovation creation, such as R&D and data curation.

## Data Handled and Organizations Registered

The platform is supplied with a large number of data sets and files from various organizations.

# of Data Sets

14,569

# of Files

106,077

# of Organizations  
Registered

719

As of December 2025



### 【Data Search】

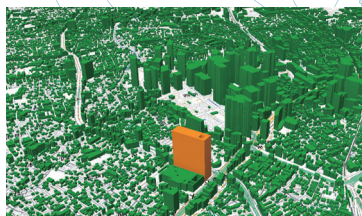
The platform enables easy search for desired data by specific criteria, such as data-providing organization, category, data format, and free keywords.



### 【Data Retrieval】

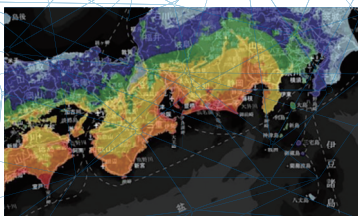
The data are available either for free of charge or for a fee, and which can be purchased via credit card or by payment on invoice.

### PLATEAU Data



Source: City Bureau, MILT

### Strong-motion Fault Model Data



Source: Central Disaster Management Council, Cabinet Office Japan

### Cross-section Traffic Data



Source: AIGID

### Point-to-point Floating Population Data



Source: Agoop

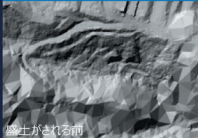
## Case Studies

Below are some of the case studies illustrating the effective use of data. Through these cases, you will be able to understand specifically how data contribute to solving real-world issues and creating values.

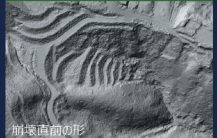
### Point Cloud Data of Shizuoka Prefecture

3次元計測データを活用して盛土の量等の民間開発の経年変化を計測 伊豆山土石流災害（2021年7月3日）

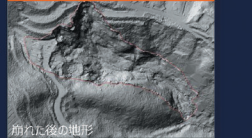
2009年国土交通省データ



2019年静岡県データ

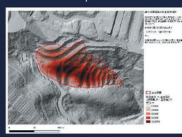


2021年7月レーザデータ

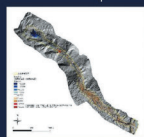


2019年 - 2009年

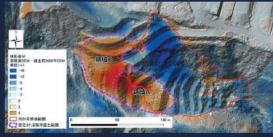
2021年 - 2019年



盛土量の算出



崩壊後の土砂移動量の算出



2021年 - 2009年 残存盛土量の算出

Source: Shizuoka Prefecture, Future Town Development Office, VIRTUAL SHIZUOKA Use Case Collection

When the Atami landslide occurred in July 2021, the Shizuoka Point Cloud Support Team used open point cloud data provided by the GsC to identify the existence of the embankment that caused the landslide and to calculate the amount of sediment that collapsed within a few hours of the disaster, enabling the immediate on-site surveys the following day and contributing to the prevention of secondary disasters. This indicates effectiveness of making data publicly available in advance in the form of open data.

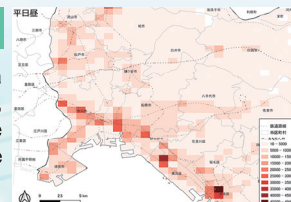
### Map Data Archived at the Registry Offices



In January 2023, the Ministry of Justice of Japan began to make publicly available the map data archived at registry offices. It means that the real estate boundary information, which was previously available only at the local Legal Affairs Bureau in each jurisdiction, is now digitally available and can be handily used by anyone. This is a major breakthrough, bringing new transparency and everyday efficiency to real estate transactions that take place locally as well as urban planning in each region. It also enables more sophisticated analysis with a greater impact on both public and private projects.

### Nation-wide Foot Traffic Open Data

While the foot traffic data obtained via private mobile devices tend to be costly, these data are very valuable as these are sourced from mesh data purchased by the MLIT to be made publicly available.



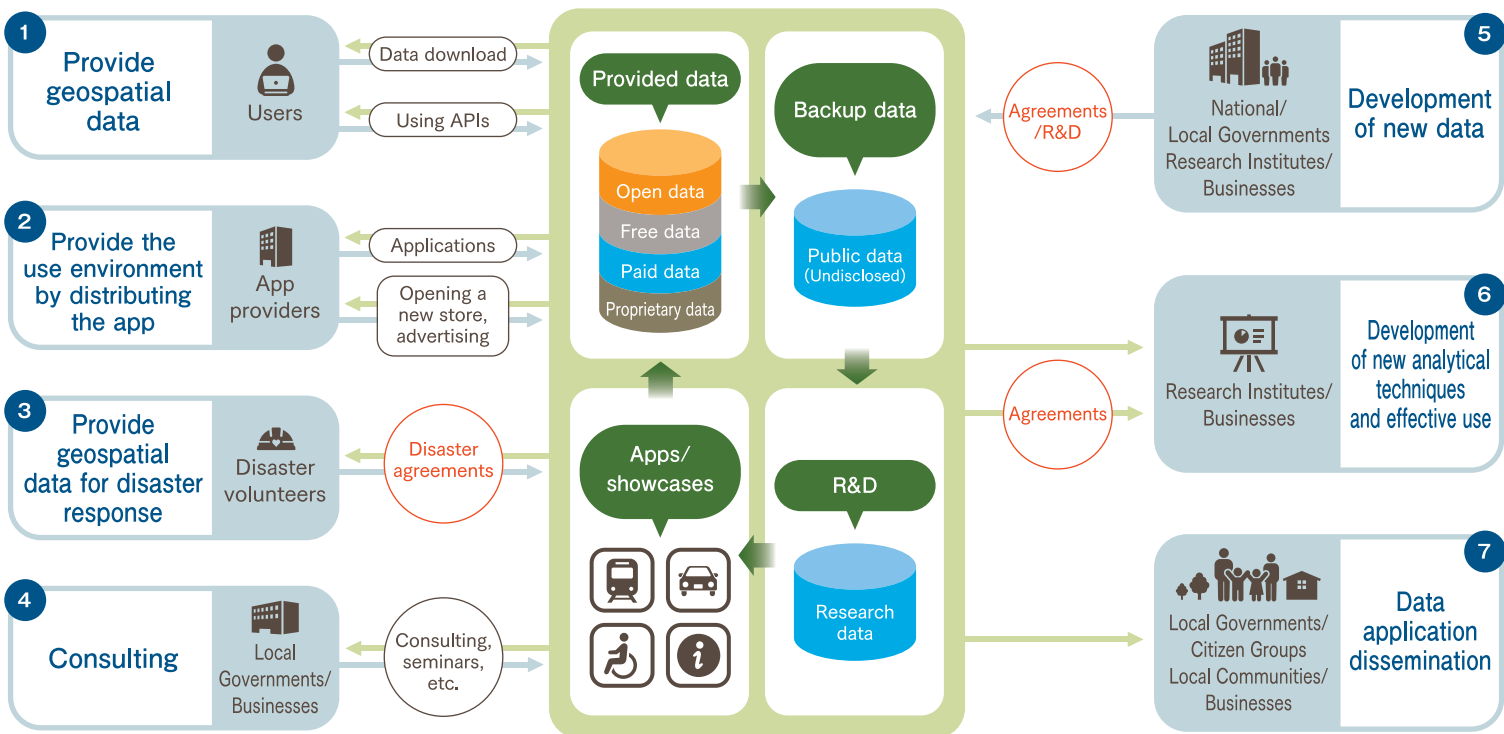
# Collaboration Across Organizations

The GsC promotes the effective use of geospatial information by integrating and combining information among public, private and academic sectors, contributing to the creation of high value for society as a whole.



## Our Services

We provide one-stop access to a variety of geospatial information (G-spatial information).



## Register now to receive prompt updates on geospatial information!

Registration is free of charge. Once registered, you can receive regular newsletters via email. The newsletters provide a wide range of information, including hot topics related to geospatial information and opinions of people involved with the GsC. User registration can also be done via QR code.

Register here.



## Activities and educational programs for dissemination and awareness building

The GsC actively participates in events and promotions. In addition, we also offer educational events, including seminars on the QGIS, etc. We are engaged in these activities to promote the effective use and dissemination of geospatial information and to provide participants and users with new knowledge and skills.



General Incorporated Association

**Association for Promotion of Infrastructure Geospatial Information Distribution**

**Geospatial Information Center**

For more information, please visit our website.

<https://www.geospatial.jp>



Sharing the latest updates on new datasets and events. Follow us for updates!



Face book



X