

AIGID



General Incorporated Association

Association for Promotion of Infrastructure Geospatial Information Distribution

For a Data Powered Society

Social infrastructure data in the real space, including various pieces of information on national territory and public facilities, vary in many aspects, including offering terms and conditions, update frequencies, licenses and rights, and there is a need for enhanced usability of such data. In addition, there is an increased demand for open participation by private companies, universities, and other users, while reducing the burden that the information providers have to bear. In this context, a sustainable operating framework would be required to establish technologies and systems as well as to remove obstacles impeding information distribution, by leveraging information and communication technologies. In 2011, as a Public/Private/Academic consortium, the Association for Promotion of Infrastructure Geospatial Information Distribution was established with the aim of improving the social infrastructural information environment. In 2014, to more strongly promote the development of a sustainable environment surrounding the distribution of social infrastructure information, the association was reorganized as a general incorporated association and restarted our activities as the Association for Promotion of Infrastructure Geospatial Information Distribution (AIGID). We encourage and look forward to the participation of those who agree with our mission.



Yoshihide Sekimoto
Representative director

Our Mission

To improve the environment for collection, distribution and efficient use of social infrastructural information including geospatial data through a Public/Private/Academic consortium.

■ Directors (in alphabetical order)

Yosuke Inoue
PwC Consulting LLC

Shuji Iwasaki
PASCO CORPORATION

Shingo Otomo
AERO TOYOTA CORPORATION

Shuichiro Kamba
CHODAI CO., LTD.

Yuzo Kuriyama
NTT InfraNet Corporation

Chikako Kurokawa
Asia Air Survey Co., Ltd.

Masahiro Shibano
KOKUSAI KOGYO CO., LTD.

Toshikazu Seto
Komazawa University

Katsuhiko Fujitsu
CTI Engineering Co., Ltd.

Hiroshi Chizuka
SpaceServiceInnovationLaboratory

■ Managing Members

AERO TOYOTA
AERO TOYOTA CORPORATION

アジア航測株式会社
ASIA AIR SURVEY CO., LTD.

esri ジャパン
ESRI Japan Corporation

NTTInfraNet
NTT INFRASTRUCTURE NETWORK CORPORATION

建設技術研究所
CTI Engineering Co., Ltd.

国際航業
KOKUSAI KOGYO CO., LTD.

ZENRIN
ZENRIN CO., LTD.

株式会社 長大
CHODAI CO., LTD.

PASCO
PASCO CORPORATION

NIPPON KOEI
NIPPON KOEI CO., LTD.

PACIFIC CONSULTANTS CO., LTD.

NIPPON KOEI URBAN SPACE
Nippon Koei Urban Space Co., Ltd

MIERUNE
MIERUNE Inc.

UrbanX Technologies
UrbanX Technologies, Inc.

pwc
PwC Consulting LLC

アサミ情報システム株式会社
Asami Intelligence System

SSIL
Space Service Innovation Laboratory

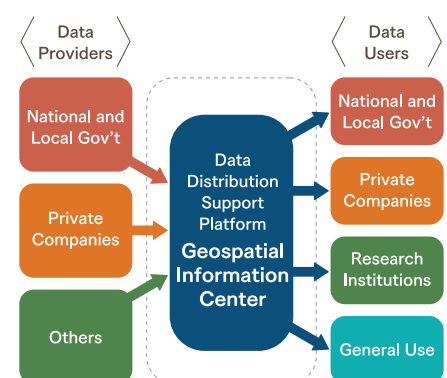
EJEC 株式会社
Eight-Japan Engineering Consultants Inc.

大日本ダイヤコンサルタント株式会社
Dia Nippon Engineering Consultants Co., Ltd.

Geospatial Information Center, the Data Hub for Social Infrastructure Information

The Geospatial Information Center (GsC) is an organization that supports the effective use and distribution of specialized geospatial information (G-spatial information) compiled and maintained by various groups in the public, private and academic sectors. The GsC is managed by the Association for Promotion of Infrastructure Geospatial Information Distribution (AIGID). It is a platform that supports distribution of data that maximize the social value of geospatial information, providing a one-stop search system for geospatial data and related information which users require, whether for a sales purpose or free of charge. Our activities include participating in various events, promotional activities, and organizing seminars. In addition, we deploy projects aimed at innovation creation, such as R&D and data curation.

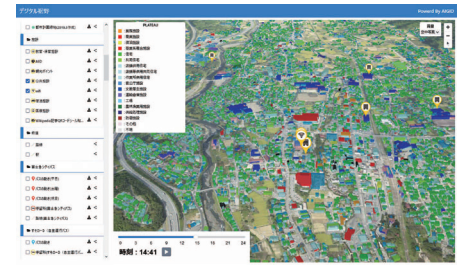
[Click here to visit our website.](#)



"Digital City Service" – A Digital Twin beyond Smart Cities

"Digital City" is a service that enables storage, management, visualization (including 3D), and provides APIs of various data based on the local governments, including local administrative data and 3D city models, on the Geospatial Information Center.

[Click here to visit our website.](#)



"Urban Data Challenge" – Resolving Local Public Issues Based on Public Data



URBAN DATA
CHALLENGE

The "Urban Data Challenge (UDC)" is an initiative to promote the effective use of public data from local governments with the aim of resolving local public issues. Launched in 2013, the challenge consists of two elements: data-driven community building and product contests open to the public. In terms of data-driven community building, "regional hubs" were designated in each prefecture over five years from 2014, in which the use and distribution of geospatial information are promoted. In terms of product contests, activities have continuously centered on awarding outstanding products that contribute to solving regional problems, submitted through public calls for entries each year.

[Click here to visit our website.](#)



"My City Series" – Supporting DX and Innovation in Local Governments

My City Construction <Online Electronic Delivery System>

This online electronic delivery system has been in operation since 2020. The system requires no initial cost and can be easily introduced at local governments. It is designed to improve efficiency in the delivery process and deliverables utilization. Contractors can easily upload their digital deliverables prior to an inspection. Preview display and data search can be smoothly performed even for large point cloud and drone data. In addition, public data can also be searched by the general public.

My City Report (MCR) <For Local Governments>

MRC for citizens

Citizen Collaborative Posting Service

A smartphone application for residents and local governments to solve local issues together. The app enables people to post any issues they find in their city of residence. The posts are shared with the local government and other app users to facilitate collaborative solutions of the issues.

MCR for road managers

AI-driven Road Damage Detection Service

An AI (Artificial Intelligence)-based system aimed at improving the efficiency and the systems of road management. Many local governments used to check for road damage visually from vehicles, but this system enables significant improvement in operational efficiency by accurately and quickly detecting road damage.

My City Forecast

A simulation tool designed to enhance the urban planning process. Using current population and facility location data, it visualizes changes at a micro-regional level between 2015 and 2040, categorized into 10 themes based on policy areas. Particularly for local governments in Japan, where population decline is progressing, the tool contributes to designing efficient and effective urban plans. Furthermore, by incorporating residents' perspectives into data analysis, it assists in improving future living environments and enhancing the sustainability of local communities.



My City Report App Displaying a Map

Some parts of the screen
may differ from the
ones actually in operation.

We are currently seeking members to engage in AIGID's initiatives.

The AIGID is currently seeking members who can join and support us as Managing Members (Annual Fee: 600,000 JPY) or General Members (Annual Fee: 10,000 JPY for individuals, 50,000 JPY for corporations). For more details about membership applications, please visit our website.



General Incorporated Association

**Association for Promotion of Infrastructure
Geospatial Information Distribution**

<Administration Office of the Association for Promotion of Infrastructure Geospatial Information Distribution>
1-10-5-203 Yoyogi, Shibuya-ku, Tokyo 151-0053 ☎ office@aigid.jp ☎ 03-6455-1845 ☎ 03-6455-1846

For more
information,
please visit our
website.



<https://aigid.jp>