



Citizens' Participation Makes the City a Better Place to Live

## What Is My City Report?

"My City Report" is the collective name for **"My City Report for Citizens,"** which enables citizens and local governments to collaborate to address community issues, and **"My City Report for Road Managers,"** which detects road damage accurately and quickly using a smartphone mounted on a vehicle. It is operated by the **My City Report Consortium**, which is comprised of user municipalities.

"Citizens' Collaborative Posting Service" for Posting 'Problems' Around the Community:

## My City Report for Citizens

Citizens can share local issues with the local government and other users by posting "problems" they find in the community. The local government, on the other hand, can centrally manage reports collected via phone, email, LINE, etc. and patrol results on the control screen.



### How to Use It

Citizens and local governments can easily share "problems" found in the community.

#### 1 Find a Problem

You find a problem, such as a damaged road.



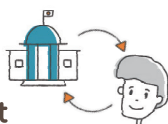
#### 2 Share the Problem

Post images, location information, etc. using "My City Report for Citizens."



#### 3 Citizens and Local Government Collaboration

The local government and citizens collaborate to respond to shared "problems."



### Key App Features

#### ▶ Filter

Reports can be filtered by "Municipality," "Reporting Category" and "Status" by pressing the "Filter" button.

#### ▶ List

"List" shows published reports chronologically by when the reports were updated. Tapping one of the reports displays its details.

#### ▶ Map

"Map" shows published reports on the map. Tapping one of the reports displays its details.



### Additional Functions

#### ▶ Setting Up Reporting Categories

Select from "road," "park," "waste," "waterway," etc.

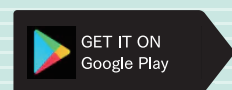
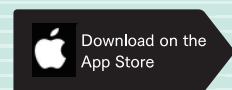
#### ▶ Themed Reports

Reports on themes set by the local government

#### ▶ Solution Reports

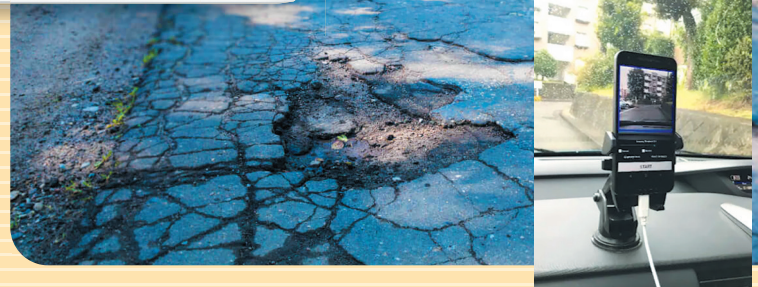
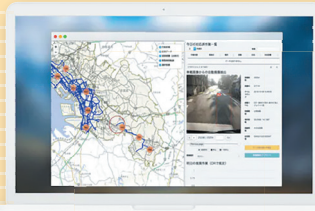
Reports on issues solved by citizens  
\*The menus vary depending on the municipality providing the service.

Scan the 2D barcode and download the app now!



# AI-powered Detection "Road Damage Detection Service" My City Report for Road Managers

AI (Artificial Intelligence) will replace traditional visual inspections of road damage that has been conducted by many municipalities, which will improve operational efficiency through accurate and quick detection of road damage.



Significantly reducing the time and effort required for on-site work,  
and improving the quality and efficiency of the work!

## How to Use It

- 1 Automatic Detection by App**  
 Damage is detected automatically with the dedicated smartphone app.
- 2 Automatic Upload**  
 Images of the damage are automatically uploaded to the server.
- 3 Check on the Control Screen**  
 Check the images on the control screen and make a decision on how to respond.

## Key App Features

### Road Surfaces Photography App

The dedicated smartphone app automatically judges damaged areas on the road, automatically sending only images containing damage to the server. The dedicated device automatically starts/stops inspections when the vehicle engine is turned on/off, ensuring smooth operation.



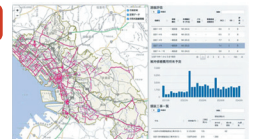
### Check and Control Damage Without Going to the Site

Data can be filtered and displayed by specific period of time, type of damage (cracks, etc.), and status (monitored, repair scheduled, or repaired).



### Dashboard

The data provided by the municipality and the conditions of the detected road damage allow simplified route evaluations and repair cost projections.



## My City Report Consortium Member Municipalities

(As of October 2024)

### Both for Citizens & for Road Managers

- Tokyo Metropolis
- Minato City, Tokyo
- Shinagawa City, Tokyo
- Setagaya City, Tokyo
- Kanagawa Prefecture
- Amagasaki City, Hyogo
- Wakayama Prefecture

### for Citizens Only

- Nasushiobara City, Tochigi
- Chiba City, Chiba
- Kamagaya City, Chiba
- Inzai City, Chiba
- Shiroy City, Chiba
- Chiyoda City, Tokyo
- Ota City, Tokyo
- Suginami City, Tokyo
- Katsushika City, Tokyo
- Kokubunji City, Tokyo
- Kunitachi City, Tokyo
- Fussa City, Tokyo
- Tama City, Tokyo
- Inagi City, Tokyo
- Kaga City, Ishikawa
- Nomi City, Ishikawa
- Awara City, Fukui
- Shiojiri City, Nagano
- Chikuhoku Village, Nagano
- Fuji City, Shizuoka
- Miyoshi City, Aichi
- Takashima City, Shiga
- Wakayama City, Wakayama
- Higashihiroshima City, Hiroshima

### for Road Managers Only

- Morioka City, Iwate
- Hanamaki City, Iwate
- Meguro City, Tokyo
- Chofu City, Tokyo
- Otsu City, Shiga
- Soja City, Okayama
- Kumamoto Prefecture



(General Incorporated Association) Association for  
Promotion of Infrastructure Geospatial Information Distribution

My City Report  
Website



【 My City Report Consortium Office 】

For more information, please visit our website:

TCM Building 2nd Floor 2-5-1 Kyobashi, Chuo-ku, Tokyo 104-0031 [Email mcr-info@aigid.jp](mailto:mcr-info@aigid.jp) <https://www.mycityreport.jp/> October 2024